

2023 LEE KEMP / 106/113

10|SHAMUS BRADY (EASTLAKE NORTH)

MAT #1 1

S. BRADY (ESTN)

Fall 2:00

9|WES LARSON (LUTHERAN WEST)

1. SHAMUS BRADY (ESTN)
2. WES LARSON (LTHW)
3. KOLT KAROVICH (ESTN)
4. PHILIP COLUCCI (CHRD)

12|PHILIP COLUCCI (CHARDON)

MAT #1 2

K. KAROVICH (ESTN)

Fall 4:38

9|KOLT KAROVICH (EASTLAKE NORTH)

S. BRADY (ESTN)

from N:1

MAT #1 35

S. BRADY (ESTN)

Fall 0:50

K. KAROVICH (ESTN)

from S:2

S. BRADY (ESTN)

from N:35

MAT #3 69

S. BRADY (ESTN)

Fall 1:41

P. COLUCCI (CHRD)

from S:36

W. LARSON (LTHW)

from S:1

MAT #2 36

W. LARSON (LTHW)

Fall 1:58

P. COLUCCI (CHRD)

from N:2

K. KAROVICH (ESTN)

from S:35

MAT #1 70

W. LARSON (LTHW)

Fall 1:40

W. LARSON (LTHW)

from N:36

2023 LEE KEMP / 120/126[1]

11|JP WROBEL (CRESTWOOD)

MAT #2 3

JP WROBEL (CRST)

Fall 0:53

9|OWEN ENGLE (UNATTACHED)

1. JP WROBEL (CRST)
2. DRAKE MARTINEZ (ESTN)
3. LUKAS JONES (LTHW)
4. OWEN ENGLE (UNTT)

10|DRAKE MARTINEZ (EASTLAKE NORTH)

MAT #2 4

D. MARTINEZ (ESTN)

Fall 3:19

9|LUKAS JONES (LUTHERAN WEST)

JP WROBEL (CRST)

from N:3

MAT #1 37

JP WROBEL (CRST)

Fall 0:39

L. JONES (LTHW)

from S:4

JP WROBEL (CRST)

from N:37

MAT #1 71

JP WROBEL (CRST)

Fall 2:42

D. MARTINEZ (ESTN)

from S:38

O. ENGLE (UNTT)

from S:3

MAT #2 38

D. MARTINEZ (ESTN)

Fall 2:56

D. MARTINEZ (ESTN)

from N:4

L. JONES (LTHW)

from S:37

MAT #2 72

L. JONES (LTHW)

Fall 1:37

O. ENGLE (UNTT)

from N:38

2023 LEE KEMP / 120/126[2]

10|DYLAN PRESTON (EASTLAKE NORTH)

MAT #2 5

D. PRESTON (ESTN)

9-0

10|BRADY JOHNSON (CHARDON)

1. DYLAN PRESTON (ESTN)
2. BRADY JOHNSON (CHRD)
3. STANLEY CAMPBELL (NRTO)
4. LUKE WALLS (BRKS)

9|STANLEY CAMPBELL (NORTH OLMSTED)

MAT #2 6

S. CAMPBELL (NRTO)

Fall 1:39

10|LUKE WALLS (BROOKSIDE)

D. PRESTON (ESTN)

from N:5

MAT #3 39

D. PRESTON (ESTN)

Fall 3:33

L. WALLS (BRKS)

from S:6

D. PRESTON (ESTN)

from N:39

MAT #3 73

D. PRESTON (ESTN)

Fall 2:34

S. CAMPBELL (NRTO)

from S:40

B. JOHNSON (CHRD)

from S:5

MAT #1 40

B. JOHNSON (CHRD)

Fall 1:33

S. CAMPBELL (NRTO)

from N:6

L. WALLS (BRKS)

from S:39

MAT #1 74

B. JOHNSON (CHRD)

Major Dec. 17-7

B. JOHNSON (CHRD)

from N:40

2023 LEE KEMP / 120/126-finals

9|OWEN ENGLE (UNATTACHED)

MAT #2 103

L. WALLS (BRKS)

Fall 0:37

10|LUKE WALLS (BROOKSIDE)

1. JP WROBEL (CRST)
2. DYLAN PRESTON (ESTN)
3. DRAKE MARTINEZ (ESTN)
4. BRADY JOHNSON (CHRD)

9|LUKAS JONES (LUTHERAN WEST)

MAT #2 104

S. CAMPBELL (NRTO)

Fall

9|STANLEY CAMPBELL (NORTH OLMSTED)

10|DRAKE MARTINEZ (EASTLAKE NORTH)

MAT #3 105

D. MARTINEZ (ESTN)

Third

Fall 3:48

10|BRADY JOHNSON (CHARDON)

11|JP WROBEL (CRESTWOOD)

MAT #3 106

JP WROBEL (CRST)

Champion
Tech Fall 19-4 4:37

10|DYLAN PRESTON (EASTLAKE NORTH)

2023 LEE KEMP / 132

10|CADEN FOLEY (CHARDON)

MAT #3 7

C. FOLEY (CHRD)

7-0

10|TRISTEN ADDIS (CRESTWOOD)

11|LUCA MEAD (LUTHERAN WEST)

MAT #3 8

L. VUCETIC (UNTT)

Fall 1:58

9|LUKE VUCETIC (UNATTACHED)

10|BRANDON BEDWORTH (EASTLAKE NORTH)

MAT #3 9

B. BEDWORTH (ESTN)

Fall 0:08

10|ZANDER NEBEE (UNATTACHED)

1. CADEN FOLEY (CHRD)
2. TRISTEN ADDIS (CRST)
3. LUKE VUCETIC (UNTT)
4. LUCA MEAD (LTHW)
5. BRANDON BEDWORTH (ESTN)
6. ZANDER NEBEE (UNTT)

C. FOLEY (CHRD)

from N:7

MAT #3 41

L. VUCETIC (UNTT)

from S:8

C. FOLEY (CHRD)

13-3 M DEC 6:00

C. FOLEY (CHRD)

from N:41

MAT #1 75

Z. NEBEE (UNTT)

from S:42

C. FOLEY (CHRD)

Fall 1:34

T. ADDIS (CRST)

from S:7

MAT #3 42

Z. NEBEE (UNTT)

from S:9

T. ADDIS (CRST)

Fall 0:35

L. VUCETIC (UNTT)

from S:41

MAT #3 76

B. BEDWORTH (ESTN)

from S:43

L. VUCETIC (UNTT)

Fall 1:41

L. MEAD (LTHW)

from N:8

MAT #1 43

B. BEDWORTH (ESTN)

from N:9

L. MEAD (LTHW)

Fall 1:37

T. ADDIS (CRST)

from N:42

MAT #2 77

L. MEAD (LTHW)

from N:43

T. ADDIS (CRST)

Tech Fall 18-5 6:00

C. FOLEY (CHRD)

from N:75

MAT #1 107

B. BEDWORTH (ESTN)

from S:76

C. FOLEY (CHRD)

Fall 1:31

C. FOLEY (CHRD)

from N:107

MAT #3 125

L. MEAD (LTHW)

from S:108

C. FOLEY (CHRD)

Fall 1:10

Z. NEBEE (UNTT)

from S:75

MAT #2 108

L. MEAD (LTHW)

from S:77

L. MEAD (LTHW)

Fall 0:29

B. BEDWORTH (ESTN)

from S:107

MAT #3 126

T. ADDIS (CRST)

from S:109

T. ADDIS (CRST)

Fall 0:36

L. VUCETIC (UNTT)

from N:76

MAT #3 109

T. ADDIS (CRST)

from N:77

T. ADDIS (CRST)

Fall 1:01

Z. NEBEE (UNTT)

from N:108

MAT #2 127

L. VUCETIC (UNTT)

from N:109

L. VUCETIC (UNTT)

Fall 0:54

2023 LEE KEMP / 138

12|DERICK MARTINEZ (EASTLAKE NORTH)

MAT #1 10

D. MARTINEZ (ESTN)

Fall 0:27

9|CODY FUENTES (ASHTABULA ST JOHN)

11|DRAKE RENNECKER (CRESTWOOD)

MAT #1 11

D. RENNECKER (CRST)

Fall 0:21

11|NATE LOPEZ (LUTHERAN WEST)

12|ADRIAN MARTINEZ (NORTH OLMSTED)

MAT #1 12

G. HUSEK (CHRD)

Fall 0:37

11|GRAHAM HUSEK (CHARDON)

D. MARTINEZ (ESTN)

from N:10

MAT #2 44

D. MARTINEZ (ESTN)

Fall 1:34

N. LOPEZ (LTHW)

from S:11

D. MARTINEZ (ESTN)

from N:44

MAT #2 78

D. MARTINEZ (ESTN)

Fall 1:36

G. HUSEK (CHRD)

from S:45

C. FUENTES (ASSJ)

from S:10

MAT #3 45

G. HUSEK (CHRD)

Fall 0:23

G. HUSEK (CHRD)

from S:12

N. LOPEZ (LTHW)

from S:44

MAT #2 79

N. LOPEZ (LTHW)

Fall 0:30

A. MARTINEZ (NRTO)

from S:46

D. RENNECKER (CRST)

from N:11

MAT #1 46

D. RENNECKER (CRST)

Fall 0:17

A. MARTINEZ (NRTO)

from N:12

C. FUENTES (ASSJ)

from N:45

MAT #3 80

D. RENNECKER (CRST)

Tech Fall 2-0 0:50

D. RENNECKER (CRST)

from N:46

D. MARTINEZ (ESTN)

from N:78

MAT #1 110

D. MARTINEZ (ESTN)

Fall 0:33

A. MARTINEZ (NRTO)

from S:79

D. MARTINEZ (ESTN)

from N:110

MAT #2 128

D. RENNECKER (CRST)

11-2

D. RENNECKER (CRST)

from S:111

G. HUSEK (CHRD)

from S:78

MAT #2 111

D. RENNECKER (CRST)

Tech Fall 15-0 4:12

D. RENNECKER (CRST)

from S:80

A. MARTINEZ (NRTO)

from S:110

MAT #1 129

C. FUENTES (ASSJ)

Fall 0:47

C. FUENTES (ASSJ)

from S:112

N. LOPEZ (LTHW)

from N:79

MAT #3 112

C. FUENTES (ASSJ)

Fall 2:47

C. FUENTES (ASSJ)

from N:80

G. HUSEK (CHRD)

from N:111

MAT #3 130

G. HUSEK (CHRD)

Fall 2:21

N. LOPEZ (LTHW)

from N:112

1. DRAKE RENNECKER (CRST)
2. DERICK MARTINEZ (ESTN)
3. GRAHAM HUSEK (CHRD)
4. CODY FUENTES (ASSJ)
5. NATE LOPEZ (LTHW)
6. ADRIAN MARTINEZ (NRTO)

2023 LEE KEMP / 144

11|LUCAS MCARTHUR (EASTLAKE NORTH)

MAT #2 13

L. MCARTHUR (ESTN)

Fall 1:19

10|BRYCE BUTTERFIELD (CHARDON)

1. NOLAN HUNTINGTON (CRST)
2. LUCAS MCARTHUR (ESTN)
3. JOEY FINNEGAN (LTHW)
4. BRYCE BUTTERFIELD (CHRD)

12|JOEY FINNEGAN (LUTHERAN WEST)

MAT #2 14

N. HUNTINGTON (CRST)

Fall 4:35

9|NOLAN HUNTINGTON (CRESTWOOD)

L. MCARTHUR (ESTN)

from N:13

MAT #3 47

N. HUNTINGTON (CRST)

Tech Fall 10-3 6:00

N. HUNTINGTON (CRST)

from S:14

L. MCARTHUR (ESTN)

from N:47

MAT #3 81

L. MCARTHUR (ESTN)

16-9

J. FINNEGAN (LTHW)

from S:48

B. BUTTERFIELD (CHRD)

from S:13

MAT #1 48

J. FINNEGAN (LTHW)

1-0

J. FINNEGAN (LTHW)

from N:14

N. HUNTINGTON (CRST)

from S:47

MAT #1 82

N. HUNTINGTON (CRST)

Fall 2:30

B. BUTTERFIELD (CHRD)

from N:48

2023 LEE KEMP / 150

9|TIMMY JESENOVEC (EASTLAKE NORTH)

MAT #3 15
11|KALEB ROTTER (UNATTACHED)

T. JESENOVEC (ESTN)
Fall 1:06

- 1. ALEX ASH (CHRD)
- 2. LOGAN SHUBERT (UNTT)
- 3. TIMMY JESENOVEC (ESTN)
- 4. COREY BARNAUSKAS (CRST)
- 5. DREW PFOST (UNTT)
- 6. KALEB ROTTER (UNTT)

10|ALEX ASH (CHARDON)

MAT #3 16
10|DREW PFOST (UNATTACHED)

A. ASH (CHRD)
Fall 0:23

10|LOGAN SHUBERT (UNATTACHED)

MAT #3 17
10|COREY BARNAUSKAS (CRESTWOOD)

L. SHUBERT (UNTT)
Fall 1:08

T. JESENOVEC (ESTN)

from N:15
MAT #2 49
D. PFOST (UNTT)

T. JESENOVEC (ESTN)
Fall 1:34

from S:16

T. JESENOVEC (ESTN)

from N:49
MAT #2 83
C. BARNAUSKAS (CRST)

from S:50

T. JESENOVEC (ESTN)
Fall 1:04

K. ROTTER (UNTT)

from S:15
MAT #2 50
C. BARNAUSKAS (CRST)

C. BARNAUSKAS (CRST)
Fall 1:20

from S:17

D. PFOST (UNTT)

from S:49
MAT #1 84
L. SHUBERT (UNTT)

from S:51

L. SHUBERT (UNTT)
Tech Fall 23-6 4:59

A. ASH (CHRD)

from N:16
MAT #3 51
L. SHUBERT (UNTT)

A. ASH (CHRD)
Fall 3:22

from N:17

K. ROTTER (UNTT)

from N:50
MAT #3 85
A. ASH (CHRD)

from N:51

A. ASH (CHRD)
Fall 1:31

T. JESENOVEC (ESTN)

from N:83
MAT #2 113
L. SHUBERT (UNTT)

L. SHUBERT (UNTT)
Fall 5:03

from S:84

T. JESENOVEC (ESTN)

from N:113
MAT #1 131
A. ASH (CHRD)

from S:114

A. ASH (CHRD)
Fall 0:30

C. BARNAUSKAS (CRST)

from S:83
MAT #1 114
A. ASH (CHRD)

A. ASH (CHRD)
Fall 3:03

from S:85

L. SHUBERT (UNTT)

from S:113
MAT #1 132
K. ROTTER (UNTT)

from S:115

L. SHUBERT (UNTT)
Fall 0:45

D. PFOST (UNTT)

from N:84
MAT #3 115
K. ROTTER (UNTT)

D. PFOST (UNTT)
Fall 3:07

from N:85

C. BARNAUSKAS (CRST)

from N:114
MAT #2 133
D. PFOST (UNTT)

from N:115

C. BARNAUSKAS (CRST)
Fall 0:35

2023 LEE KEMP / 157

10|EVAN KROMER (LUTHERAN WEST)

MAT #1 18

E. KROMER (LTHW)

Fall 1:02

12|NICK SPRINGER (EASTLAKE NORTH)

1. JOE PICCIRILLO (ASSJ)
2. EVAN KROMER (LTHW)
3. NICK SPRINGER (ESTN)
4. JOVANNI RODRIGUEZ (UNTT)
5. JACKSON RATTRAY (CRST)

10|JOE PICCIRILLO (ASHTABULA ST JOHN)

19

J. PICCIRILLO (ASSJ)

BYE

10|JACKSON RATTRAY (CRESTWOOD)

MAT #1 20

J. RODRIGUEZ (UNTT)

Fall 6:00

9|JOVANNI RODRIGUEZ (UNATTACHED)

E. KROMER (LTHW)

from N:18

52

E. KROMER (LTHW)

BYE

from S:19

E. KROMER (LTHW)

from N:52

MAT #2 86

J. RODRIGUEZ (UNTT)

from S:53

E. KROMER (LTHW)

Fall 1:59

N. SPRINGER (ESTN)

from S:18

MAT #2 53

N. SPRINGER (ESTN)

Fall 1:40

J. RODRIGUEZ (UNTT)

from S:20

from S:52

87

J. RATTRAY (CRST)

from S:54

J. RATTRAY (CRST)

BYE

J. PICCIRILLO (ASSJ)

from N:19

MAT #3 54

J. PICCIRILLO (ASSJ)

Fall 1:14

J. RATTRAY (CRST)

from N:20

N. SPRINGER (ESTN)

from N:53

MAT #3 88

J. PICCIRILLO (ASSJ)

from N:54

J. PICCIRILLO (ASSJ)

Fall 0:50

E. KROMER (LTHW)

from N:86

MAT #1 116

E. KROMER (LTHW)

Fall 0:45

J. RATTRAY (CRST)

from S:87

E. KROMER (LTHW)

from N:116

MAT #3 134

J. PICCIRILLO (ASSJ)

from S:117

J. PICCIRILLO (ASSJ)

Fall 3:47

J. RODRIGUEZ (UNTT)

from S:86

MAT #1 117

J. PICCIRILLO (ASSJ)

Fall 1:08

J. PICCIRILLO (ASSJ)

from S:88

J. RATTRAY (CRST)

from S:116

MAT #1 135

N. SPRINGER (ESTN)

from S:118

N. SPRINGER (ESTN)

Fall 2:28

from N:87

118

N. SPRINGER (ESTN)

BYE

N. SPRINGER (ESTN)

from N:88

J. RODRIGUEZ (UNTT)

from N:117

136

from N:118

J. RODRIGUEZ (UNTT)

BYE

2023 LEE KEMP / 165

12|AIDAN CROYLE (CHARDON)

MAT #2 21

A. CROYLE (CHRD)

Fall 0:42

9|BRODIE MACLEARIE (CRESTWOOD)

10|MATTHEW CHALKWATER (NORTH OLMSTED)

MAT #2 22

M. CHALKWATER (NRTO)

Tech Fall 16-2 5:43

10|SAM JUSTICE (LUTHERAN WEST)

11|AIDEN HEATH (ASHTABULA ST JOHN)

MAT #2 23

A. HEATH (ASSJ)

Fall 3:14

10|DYLAN KICK (UNATTACHED)

1. AIDEN HEATH (ASSJ)
2. MATTHEW CHALKWATER (NRTO)
3. AIDAN CROYLE (CHRD)
4. DYLAN KICK (UNTT)
5. SAM JUSTICE (LTHW)
6. BRODIE MACLEARIE (CRST)

A. CROYLE (CHRD)

from N:21

MAT #1 55

A. CROYLE (CHRD)

Fall 1:08

S. JUSTICE (LTHW)

from S:22

A. CROYLE (CHRD)

from N:55

MAT #2 89

A. CROYLE (CHRD)

Fall 1:00

D. KICK (UNTT)

from S:56

B. MACLEARIE (CRST)

from S:21

MAT #3 56

D. KICK (UNTT)

Fall 3:02

D. KICK (UNTT)

from S:23

S. JUSTICE (LTHW)

from S:55

MAT #2 90

A. HEATH (ASSJ)

Fall 2:41

A. HEATH (ASSJ)

from S:57

M. CHALKWATER (NRTO)

from N:22

MAT #3 57

M. CHALKWATER (NRTO)

Fall 4:36

A. HEATH (ASSJ)

from N:23

B. MACLEARIE (CRST)

from N:56

MAT #1 91

M. CHALKWATER (NRTO)

Fall 3:05

M. CHALKWATER (NRTO)

from N:57

A. CROYLE (CHRD)

from N:89

MAT #1 119

A. HEATH (ASSJ)

Fall 0:38

A. HEATH (ASSJ)

from S:90

A. CROYLE (CHRD)

from N:119

MAT #1 137

A. CROYLE (CHRD)

6-4

M. CHALKWATER (NRTO)

from S:120

D. KICK (UNTT)

from S:89

MAT #1 120

M. CHALKWATER (NRTO)

Fall 4:42

M. CHALKWATER (NRTO)

from S:91

A. HEATH (ASSJ)

from S:119

MAT #3 138

A. HEATH (ASSJ)

Fall 1:08

B. MACLEARIE (CRST)

from S:121

S. JUSTICE (LTHW)

from N:90

MAT #2 121

S. JUSTICE (LTHW)

Fall 0:47

B. MACLEARIE (CRST)

from N:91

D. KICK (UNTT)

from N:120

MAT #3 139

D. KICK (UNTT)

Fall 0:20

S. JUSTICE (LTHW)

from N:121

2023 LEE KEMP / 175

11|WILL VUCETIC (CHARDON)

MAT #3 24

W. VUCETIC (CHRD)

Fall 3:08

1. WILL VUCETIC (CHRD)
2. NOAH HEATH (ASSJ)
3. BRENTON MASON (CRST)
4. GRACE SEATON (UNTT)

10|NOAH HEATH (ASHTABULA ST JOHN)

10|GRACE SEATON (UNATTACHED)

MAT #3 25

B. MASON (CRST)

Fall 0:34

10|BRENTON MASON (CRESTWOOD)

W. VUCETIC (CHRD)

from N:24

MAT #1 58

W. VUCETIC (CHRD)

Tech Fall 18-3 3:22

B. MASON (CRST)

from S:25

W. VUCETIC (CHRD)

from N:58

MAT #1 92

W. VUCETIC (CHRD)

Fall 0:53

G. SEATON (UNTT)

from S:59

N. HEATH (ASSJ)

from S:24

MAT #2 59

N. HEATH (ASSJ)

Fall 3:11

G. SEATON (UNTT)

from N:25

B. MASON (CRST)

from S:58

MAT #2 93

N. HEATH (ASSJ)

Fall 1:30

N. HEATH (ASSJ)

from N:59

2023 LEE KEMP / 190

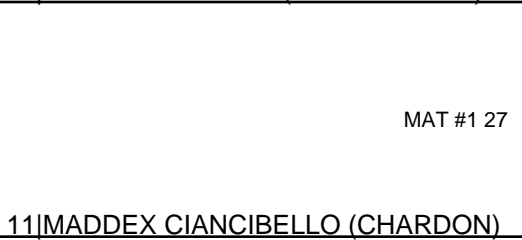
11|NOAH MERI (NORTH OLMSTED)



N. MERI (NRTO)
BYE

- 1. MADDEX CIANCIBELLO (CHRD)
- 2. NOAH MERI (NRTO)
- 3. LOGAN WEBSTER (UNTT)

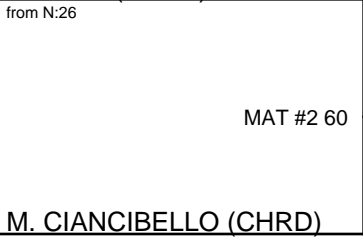
10|LOGAN WEBSTER (UNATTACHED)



M. CIANCIBELLO (CHRD)
Fall 5:00

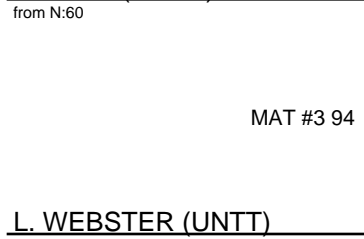
11|MADDEX CIANCIBELLO (CHARDON)

N. MERI (NRTO)



M. CIANCIBELLO (CHRD)
from S:27

N. MERI (NRTO)

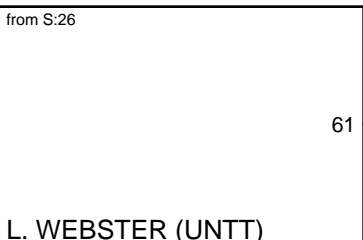


L. WEBSTER (UNTT)
from S:61

N. MERI (NRTO)

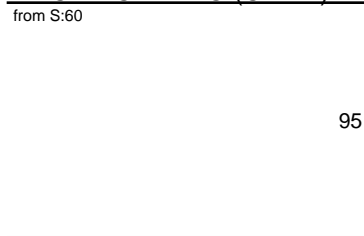
Major Dec. 11-1

from S:26



L. WEBSTER (UNTT)
from N:27

M. CIANCIBELLO (CHRD)



from N:61

M. CIANCIBELLO (CHRD)

BYE

2023 LEE KEMP / 215[1]

11|GAVIN MCINTYRE (CRESTWOOD)

MAT #1 28

G. MCINTYRE (CRST)

Fall 3:41

1. GAVIN MCINTYRE (CRST)
2. DALTON NELLIS (ASSJ)
3. MICHAEL BELANICH (ESTN)
4. NICK HUNT (LTHW)

9|DALTON NELLIS (ASHTABULA ST JOHN)

11|NICK HUNT (LUTHERAN WEST)

MAT #3 29

M. BELANICH (ESTN)

Fall 1:05

9|MICHAEL BELANICH (EASTLAKE NORTH)

G. MCINTYRE (CRST)

from N:28

MAT #1 62

G. MCINTYRE (CRST)

6-3

M. BELANICH (ESTN)

from S:29

G. MCINTYRE (CRST)

from N:62

MAT #2 96

G. MCINTYRE (CRST)

Fall 3:17

N. HUNT (LTHW)

from S:63

D. NELLIS (ASSJ)

from S:28

MAT #1 63

D. NELLIS (ASSJ)

Fall 0:13

N. HUNT (LTHW)

from N:29

M. BELANICH (ESTN)

from S:62

MAT #2 97

D. NELLIS (ASSJ)

Fall 2:12

D. NELLIS (ASSJ)

from N:63

2023 LEE KEMP / 215[2]

9|BRADEN BOWEN (BROOKSIDE)

MAT #3 30

11|BLAKE BAUMGARDNER (UNATTACHED)

B. BAUMGARDNER (UNTT)
Fall 0:17

1. AUSTIN HARDESTY (CHRD)
2. BLAKE BAUMGARDNER (UNTT)
3. BRADEN BOWEN (BRKS)
4. DOMINIC LLOYD (NRTO)

10|DOMINIC LLOYD (NORTH OLMSTED)

MAT #3 31

11|AUSTIN HARDESTY (CHARDON)

A. HARDESTY (CHRD)
Fall 0:25

B. BOWEN (BRKS)

from N:30

MAT #1 64

A. HARDESTY (CHRD)
Fall 1:47

A. HARDESTY (CHRD)
from S:31

B. BOWEN (BRKS)

from N:64

MAT #1 98

D. LLOYD (NRTO)
from S:65

B. BOWEN (BRKS)

Fall 3:55

B. BAUMGARDNER (UNTT)

from S:30

MAT #1 65

D. LLOYD (NRTO)
from N:31

B. BAUMGARDNER (UNTT)
Fall 0:26

A. HARDESTY (CHRD)

from S:64

MAT #2 99

B. BAUMGARDNER (UNTT)
from N:65

A. HARDESTY (CHRD)

Fall 1:46

2023 LEE KEMP / 215-finals

- 1. GAVIN MCINTYRE (CRST)
- 2. AUSTIN HARDESTY (CHRD)
- 3. DALTON NELLIS (ASSJ)
- 4. BLAKE BAUMGARDNER (UNTT)

143

11|NICK HUNT (LUTHERAN WEST)

9|MICHAEL BELANICH (EASTLAKE NORTH)

MAT #3 144

N. HUNT (LTHW)
Fall 0:12

MAT #2 145

M. BELANICH (ESTN)
Tech Fall 16-4 5:00

10|DOMINIC LLOYD (NORTH OLMSTED)

9|BRADEN BOWEN (BROOKSIDE)

9|DALTON NELLIS (ASHTABULA ST JOHN)

11|GAVIN MCINTYRE (CRESTWOOD)

MAT #1 146

Third
D. NELLIS (ASSJ)
Fall 2:05

MAT #1 147

Champion
G. MCINTYRE (CRST)
2-1

11|BLAKE BAUMGARDNER (UNATTACHED)

11|AUSTIN HARDESTY (CHARDON)

2023 LEE KEMP / 285

- 1. LOGAN BRYANT (CHRD)
- 2. DEAN CULLUP (NRTO)
- 3. EMILIO SMITH (BRKS)
- 4. PATRICK SHEEHAN (ESTN)
- 5. CARTER SANBORN (LTHW)

12|EMILIO SMITH (BROOKSIDE)

MAT #3 32
10 DEAN CULLUP (NORTH OLMSTED)

D. CULLUP (NRTO)
Fall 1:20

33
9 PATRICK SHEEHAN (EASTLAKE NORTH)

P. SHEEHAN (ESTN)
BYE

12|CARTER SANBORN (LUTHERAN WEST)

MAT #3 34
11 LOGAN BRYANT (CHARDON)

L. BRYANT (CHRD)
Fall 0:55

E. SMITH (BRKS)

from N:32
MAT #1 66
P. SHEEHAN (ESTN)
from S:33

E. SMITH (BRKS)
Fall 1:03

E. SMITH (BRKS)

from N:66
MAT #3 100
L. BRYANT (CHRD)
from S:67

L. BRYANT (CHRD)
Fall 1:04

D. CULLUP (NRTO)

from S:32
MAT #2 67
L. BRYANT (CHRD)
from S:34

L. BRYANT (CHRD)
Fall

P. SHEEHAN (ESTN)

from S:66
101
C. SANBORN (LTHW)
from S:68

P. SHEEHAN (ESTN)
Inj Default

from N:33

68
C. SANBORN (LTHW)
from N:34

C. SANBORN (LTHW)
BYE

D. CULLUP (NRTO)

from N:67
102
D. CULLUP (NRTO)
from N:68

D. CULLUP (NRTO)
BYE

E. SMITH (BRKS)

from N:100
122
C. SANBORN (LTHW)
from S:101

E. SMITH (BRKS)
Inj Default

E. SMITH (BRKS)

from N:122
140
E. SMITH (BRKS)
from S:123

E. SMITH (BRKS)
BYE

L. BRYANT (CHRD)

from S:100
123
L. BRYANT (CHRD)
from S:102

L. BRYANT (CHRD)
BYE

C. SANBORN (LTHW)

from S:122
MAT #1 141
D. CULLUP (NRTO)
from S:124

D. CULLUP (NRTO)
Forfeit

P. SHEEHAN (ESTN)

from N:101
MAT #1 124
D. CULLUP (NRTO)
from N:102

D. CULLUP (NRTO)
Fall 0:54

L. BRYANT (CHRD)

from N:123
MAT #2 142
P. SHEEHAN (ESTN)
from N:124

L. BRYANT (CHRD)
Fall 0:50